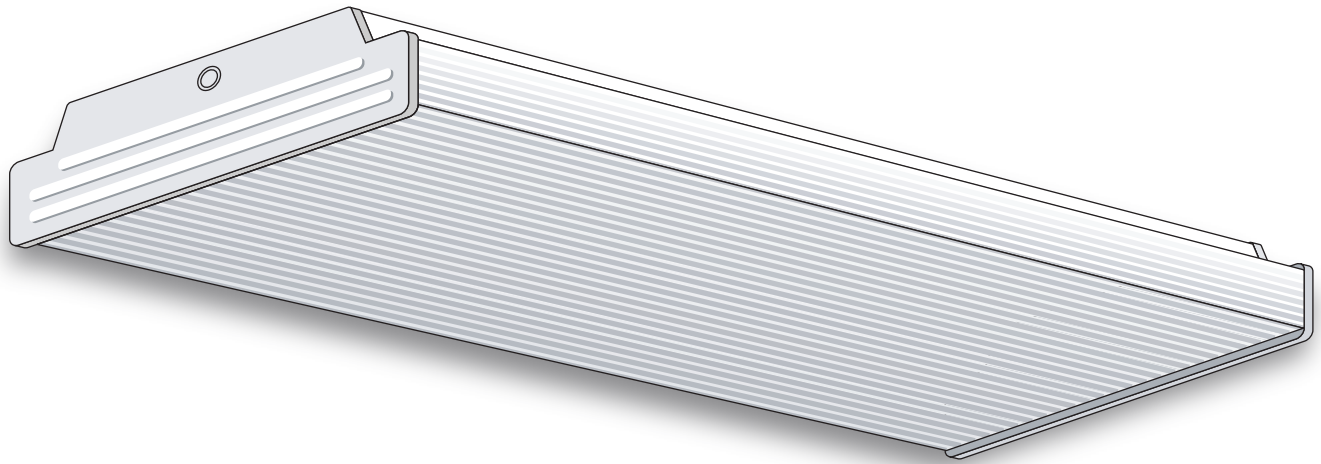


# A & L Electric Sales

Tomorrows lighting for a Greener Planet

# Wraparound



## GENERAL DESCRIPTION

A low-profile 2- or 4-lamp wraparound for use with one-piece prismatic lenses.

## SPECIFICATIONS

**Housing:** Die-formed heavy-gauge steel with side flanges for extra uniformity and rigidity.

**Ballast Cover:** Snaps into housing to cover ballast and wires.

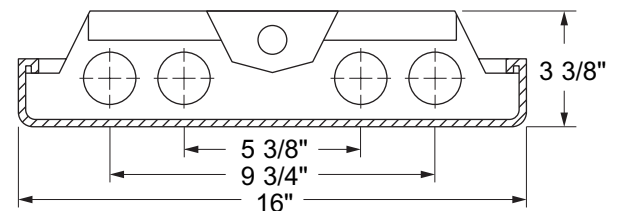
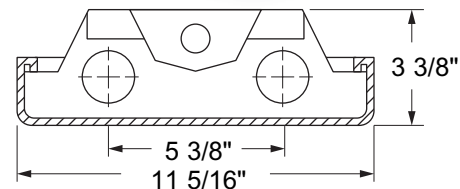
**Socket Plates:** Slide on, for easy wiring.

**Ends:** Embossed for rigidity. Can be ordered with cut down ends for reverse-form puffs.

**Finish:** White polyester polymer with a minimum of 82% reflectivity.

**Diffuser (not included):** Fixture is designed for one-piece prismatic lenses. Diffusers snap on for easy servicing and hinge from either side. 6' and 8' units require two individual diffusers joined with a plastic strap.

**Mounting:** Units may be surface or stem mounted, individually or in continuous rows.



## NOTES

Dimensions subject to change without notice.

Catalog No.	Lamps	Voltage	Length	Width	Type
F-WA217	2 T8	120V-277V	24"	11"	Bi-Pin Shunted
F-WA232	2 T8	120V-277V	48"	11"	Bi-Pin Shunted
F-WA232-EMG	2 T8 (Emergency)	120V-277V	48"	11"	Bi-Pin Shunted
F-WA296T8	2 T8	120V-277V	96"	15-1/2"	Slimline
F-WA2232	4 T8 (Tandem)	120V-277V	96"	15-1/2"	Bi-Pin Shunted
F-WA417	4 T8 (Tandem)	120V-277V	24"	15-1/2"	Bi-Pin Shunted
F-WA432	4 T8 (Tandem)	120V-277V	48"	15-1/2"	Bi-Pin Shunted
F-WA432-EMG	4 T8 (Emergency)	120V-277V	48"	15-1/2"	Bi-Pin Shunted
F-WA496T8	4 T8	120V-277V	96"	15-1/2"	Slimline