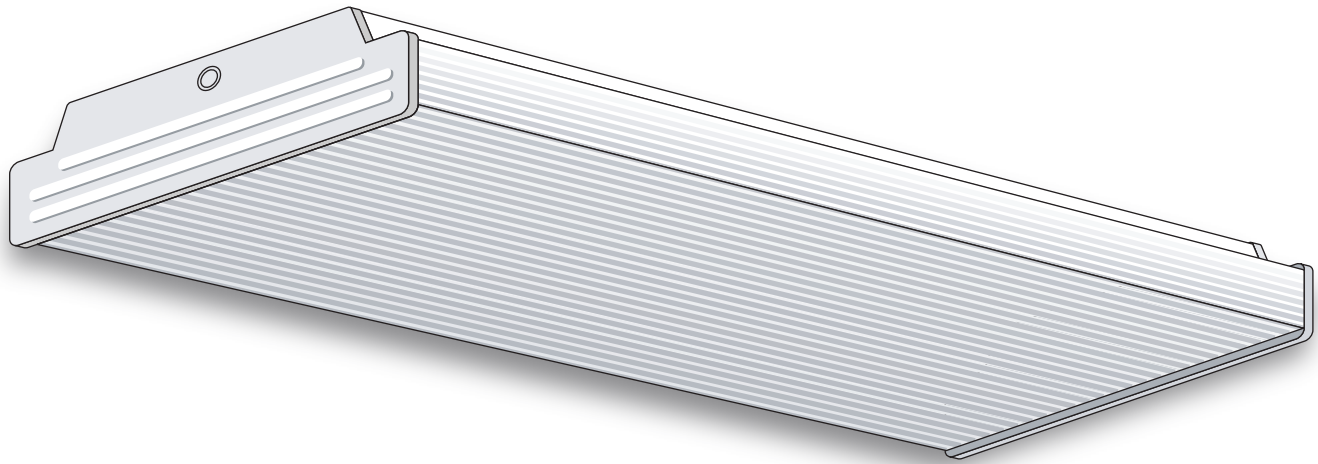


A & L Electric Sales

Tomorrows lighting for a Greener Planet

Wraparound



GENERAL DESCRIPTION

A low-profile 2- or 4-lamp wraparound for use with one-piece prismatic lenses.

SPECIFICATIONS

Housing: Die-formed heavy-gauge steel with side flanges for extra uniformity and rigidity.

Ballast Cover: Snaps into housing to cover ballast and wires.

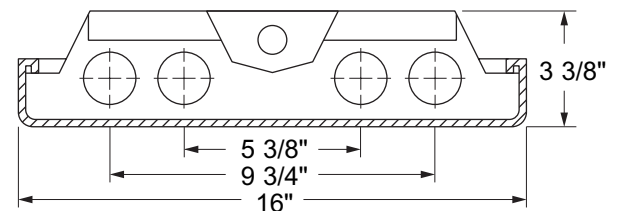
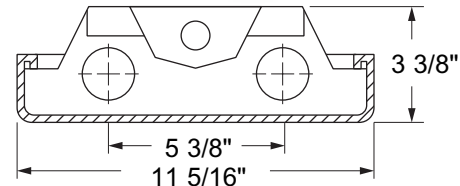
Socket Plates: Slide on, for easy wiring.

Ends: Embossed for rigidity. Can be ordered with cut down ends for reverse-form puffs.

Finish: White polyester polymer with a minimum of 82% reflectivity.

Diffuser (not included): Fixture is designed for one-piece prismatic lenses. Diffusers snap on for easy servicing and hinge from either side. 6' and 8' units require two individual diffusers joined with a plastic strap.

Mounting: Units may be surface or stem mounted, individually or in continuous rows.



NOTES

Dimensions subject to change without notice.

| Catalog No. | Lamps | Voltage | Length | Width | Type |
|--------------|-------------------|-----------|--------|---------|----------|
| F-WA220 | 2 T12 | 120V | 24" | 11" | Bi-Pin |
| F-WA240 | 2 T12 | 120V | 48" | 11" | Bi-Pin |
| F-WA240-277 | 2 T12 | 277V | 48" | 11" | Bi-Pin |
| F-WA240-EMG | 2 T12 (Emergency) | 120V-277V | 48" | 11" | Bi-Pin |
| F-WA296 | 2 T12 | 120V | 96" | 15-1/2" | Slimline |
| F-WA296-277 | 2 T12 | 120V | 96" | 15-1/2" | Slimline |
| F-WA2240 | 4 T12 (Tandem) | 120V | 96" | 15-1/2" | Bi-Pin |
| F-WA2240-277 | 4 T12 (Tandem) | 277V | 96" | 15-1/2" | Bi-Pin |
| F-WA420 | 4 T12 | 120V | 24" | 15-1/2" | Bi-Pin |
| F-WA440 | 4 T12 | 120V | 48" | 15-1/2" | Bi-Pin |
| F-WA440-277 | 4 T12 | 277V | 48" | 15-1/2" | Bi-Pin |
| F-WA440-EMG | 4 T12 (Emergency) | 120V-277V | 48" | 15-1/2" | Bi-Pin |
| F-WA496 | 4 T12 | 120V | 96" | 15-1/2" | Slimline |
| F-WA496-277 | 4 T12 | 277V | 96" | 15-1/2" | Slimline |