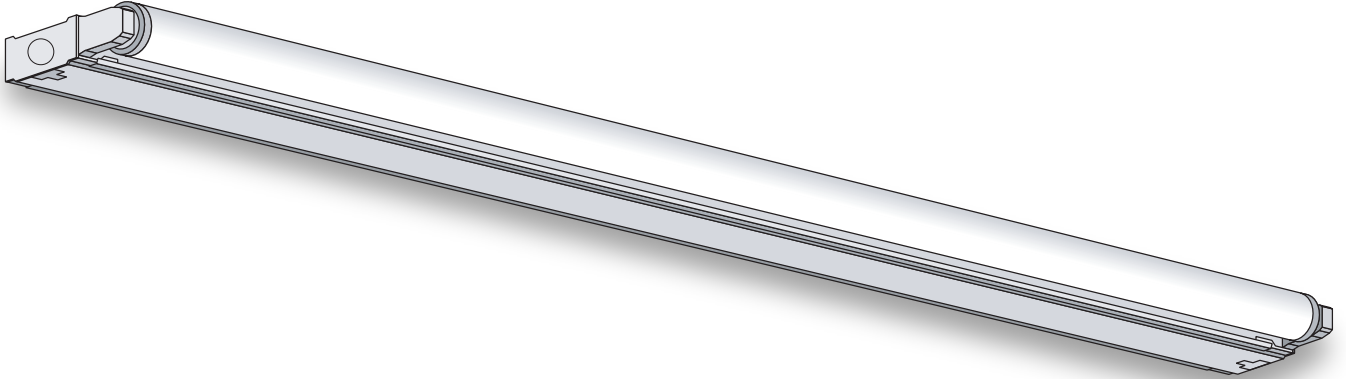


A & L Electric Sales

Tomorrows lighting for a Greener Planet

Sidemount Strip



GENERAL DESCRIPTION

An all purpose economy fluorescent 1-light sidemount strip that can be adapted to be a double sidemount, right angle or 3-light strip. All fixture parts snap together for ease of installation and maintenance.

SPECIFICATIONS

Housing: Die-formed heavy-gauge cold rolled steel. Fixture can be converted to double sidemount by removing socket tabs. Accepts slide-on or screw-on sockets. Side knockouts are included for a convenience outlet, a pull switch and conduit.

Cover: Snap-on type to simplify installation. Two covers are used for tandem units.

Ends and Socket Plates: Snap in for ease of assembly. Knockout tab for screw-on socket can be removed to make a right angle fixture.

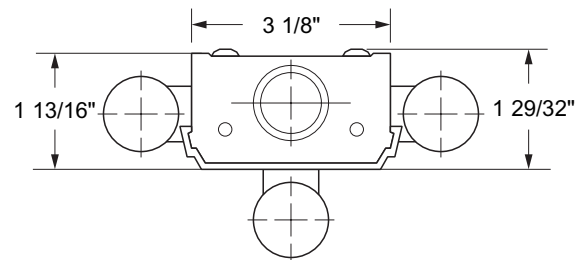
Coupler: Used to join bodies together and as a center socket plate on tandem fixtures.

Finish: White polyester polymer with a minimum of 82% reflectivity.

Mounting: Designed for surface, chain and stem hanging. Can be installed as individual units or in continuous rows.

NOTES

Dimensions subject to change without notice.



Catalog No.	Lamps	Voltage	Length	Type
F-SM115	1 T12	120V	18"	Bi-pin
F-SM120	1 T12	120V	24"	Bi-pin
F-SM130	1 T12	120V	36"	Bi-pin
F-SM140	1 T12	120V	48"	Bi-pin
F-SM215	2 T12	120V	18"	Bi-pin
F-SM220	2 T12	120V	24"	Bi-pin
F-SM230	2 T12	120V	36"	Bi-pin
F-SM240	2 T12	120V	48"	Bi-pin