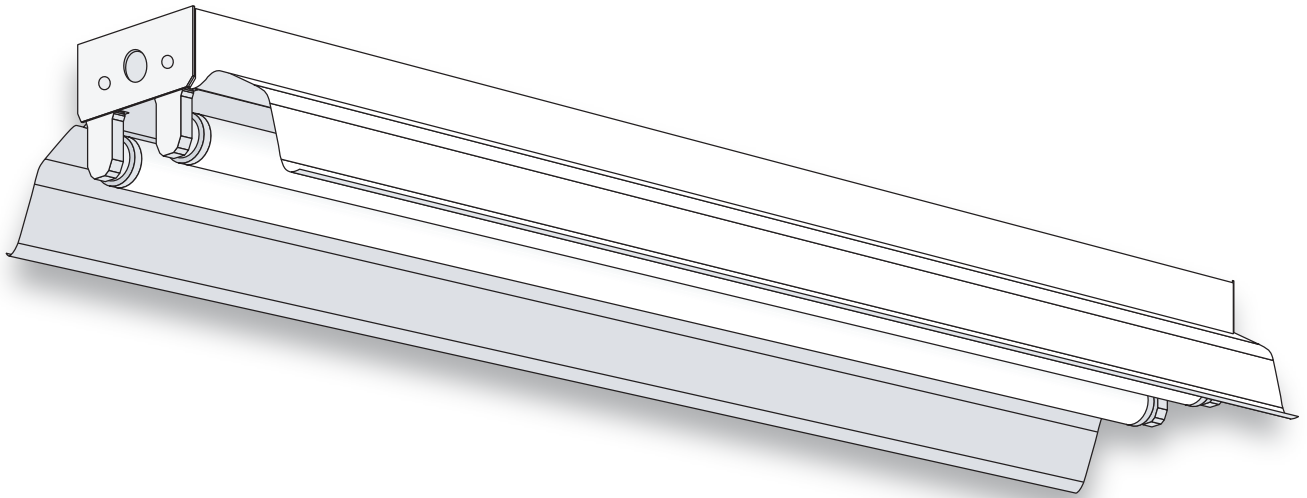


# A & L Electric Sales

Tomorrows lighting for a Greener Planet

## Industrial



### GENERAL DESCRIPTION

A high quality all-purpose economy Industrial with symmetrical reflector. All fixture parts snap together for ease of installation and maintenance. Side knockouts are included for a convenience outlet, a pull switch and conduit. Sides and back have knockouts for chain hangers.

### SPECIFICATIONS

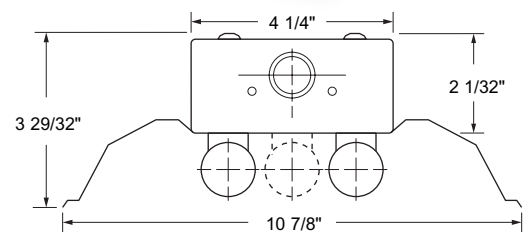
**Housing:** Die-formed heavy-gauge cold rolled steel with side knockouts for a convenience outlet, a pull switch and conduit. Sides and back have knockouts for chain hanger.

**Reflector:** One end of reflector slides into socket plate and the other end is held on by a cam-lock (not included). Fabricated in two sections for 72" and 96" bodies to simplify installation. Aligners available for tandem configurations and continuous runs.

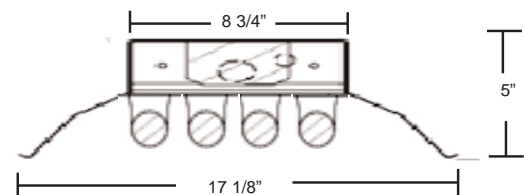
**Ends and Socket Plates:** Snap-in type. Ends also function as couplers for continuous runs.

**Finish:** White polyester polymer with a minimum of 82% reflectivity.

**Mounting:** Designed for surface, stem or chain hanging. Can be installed as individual units or in continuous rows.



### 3 & 4 Light



### NOTES

Dimensions subject to change without notice.

Catalog No.	Lamps	Voltage	Length	Type
F-1132	1 T8	120V-277V	48"	Bi-pin Shunted
F-1232	2 T8	120V-277V	48"	Bi-pin Shunted
F-12132	2 T8 (Tandem)	120V-277V	96"	Bi-pin Shunted
F-1196T8	1 T8	120V-277V	96"	Slimline
F-12232	4 T8 (Tandem)	120V-277V	96"	Bi-pin Shunted
F-1296T8	2 T8	120V-277V	96"	Slimline
F-1296T8HO	2 T8 HO	120V	96"	HO
F-1296T8HO-277	2 T8 HO	277V	96"	HO
F-1496T8	4 T8	120V	96"	Slimline
F-1496T8HO	4 T8	120V	96"	HO
F-1496T8HO-277	4 T8	277V	96"	HO
F-12254HO	4 Lamp	120V-277V	96"	HO
F-12232	4 Lamp	120V-277V	96"	Bi-pin