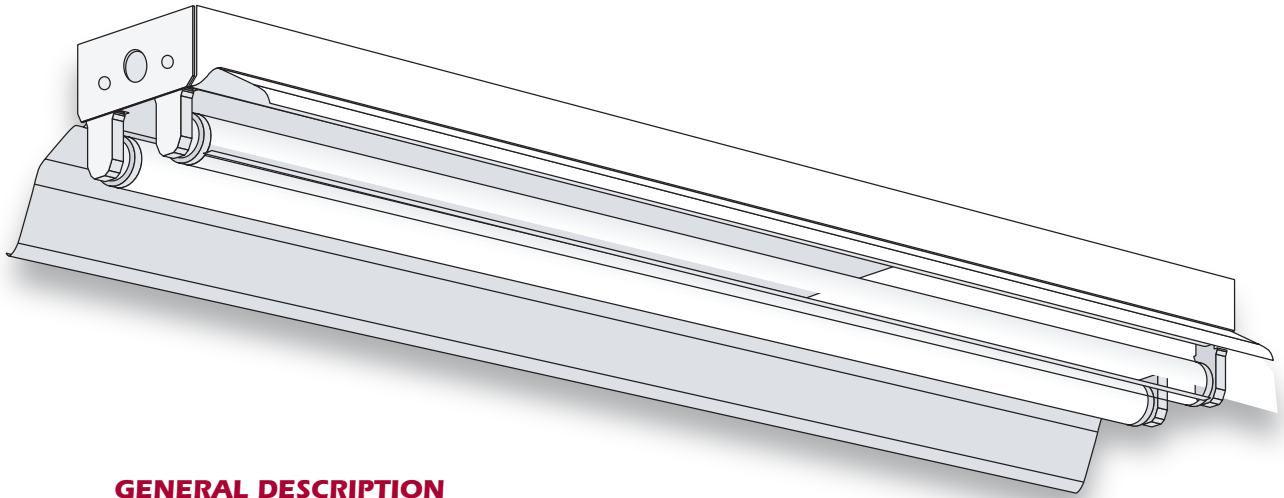


# A & L Electric Sales

Tomorrows lighting for a Greener Planet

# Industrial



## GENERAL DESCRIPTION

A high quality all-purpose economy Industrial with symmetrical reflector. All fixture parts snap together for ease of installation and maintenance. Side knockouts are included for a convenience outlet, a pull switch and conduit. Sides and back have knockouts for chain hangers.

## SPECIFICATIONS

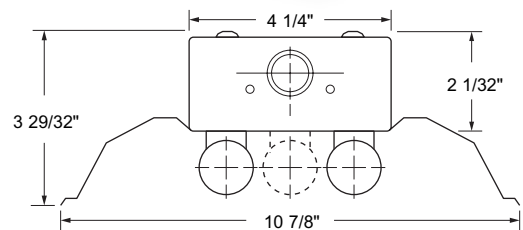
**Housing:** Die-formed heavy-gauge cold rolled steel with side knockouts for a convenience outlet, a pull switch and conduit. Sides and back have knockouts for chain hanger.

**Reflector:** One end of reflector slides into socket plate and the other end is held on by a cam-lock (not included). Fabricated in two sections for 72" and 96" bodies to simplify installation. Aligners available for tandem configurations and continuous runs.

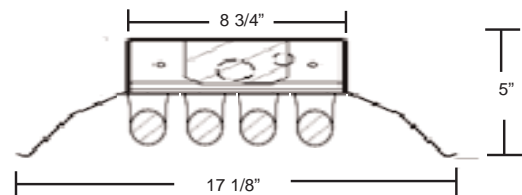
**Ends and Socket Plates:** Snap-in type. Ends also function as couplers for continuous runs.

**Finish:** White polyester polymer with a minimum of 82% reflectivity.

**Mounting:** Designed for surface, stem or chain hanging. Can be installed as individual units or in continuous rows.



## 3 & 4 Light



## NOTES

Dimensions subject to change without notice.

Catalog No.	Lamps	Voltage	Length	Type
F-I140	1 T12	120V	48"	Bi-pin
F-I240	2 T12	120V	48"	Bi-pin
F-I240-277	2 T12	277V	48"	Bi-pin
F-I248HO	2 T12 HO	120V-277V	48"	HO
F-I196	1 T12	120V	96"	Slimline
F-I196-277	1 T12	277V	96"	Slimline
F-I2140	2 T12 (Tandem)	120V	96"	Bi-pin
F-I2240	4 T12 (Tandem)	120V	96"	Bi-pin
F-I2240-277	4 T12 (Tandem)	277V	96"	Bi-pin
F-I296	2 T12	120V	96"	Slimline
F-I296-277	2 T12	277V	96"	Slimline
F-I296HO	2 T12 HO	120V-277V	96"	HO
F-I296VHO	2 T12 VHO	120V	96"	HO
F-I296VHO-277	2 T12 VHO	277V	96"	HO
F-I496	4 T12	120V	96"	Slimline
F-I496-277	4 T12	277V	96"	Slimline
F-I496HO	4 T12	120V-277V	96"	HO
F-I2254HO	4 Lamp	120V-277V	96"	HO
F-I2232	4 Lamp	120V-277V	96"	Bi-pin