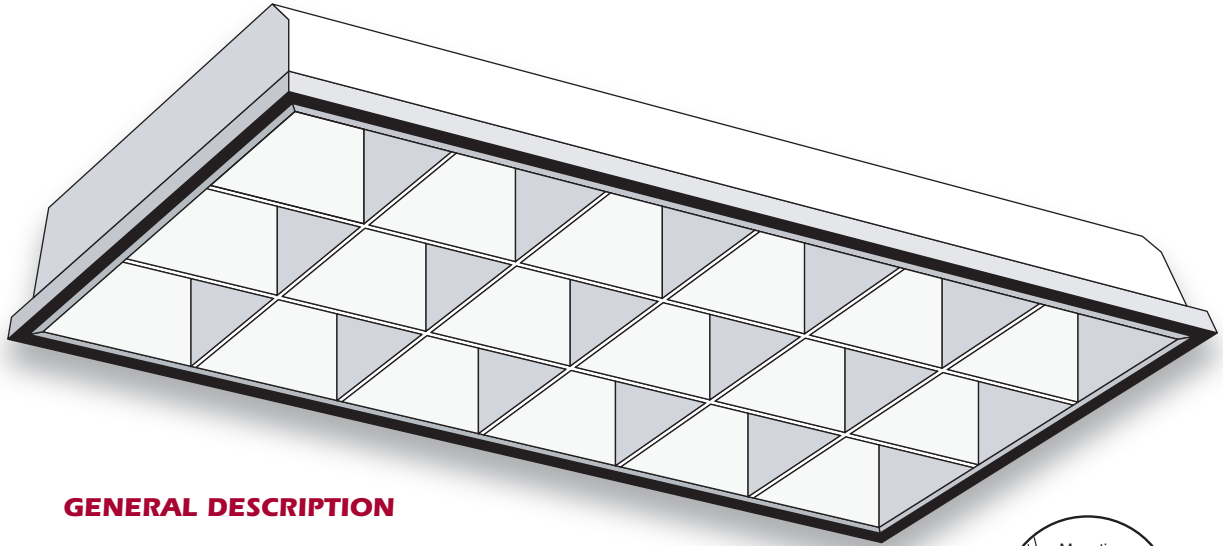
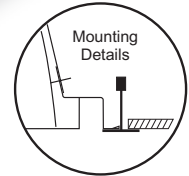


2x4 Parabolic



GENERAL DESCRIPTION

A high performance recessed 2 x 4 troffer for nominal 3" deep parabolic louvers. Designed for installation in exposed T-bar ceilings.



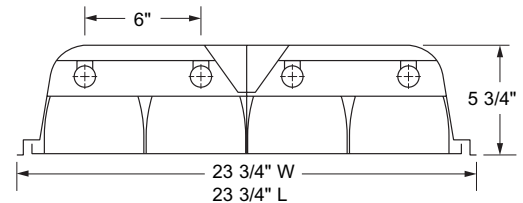
SPECIFICATIONS

Housing: 5-³/₄" deep standard 23-gauge or 20-gauge cold rolled steel to meet New York City specifications, with rolled side flanges for safety. Side flanges attach to parabolic body with rivets (not included). Provided with four corner tie points for safety-wire supports.

Ends: Snap into housing and attach to parabolic body and side flanges with rivets (not included). Built-in earthquake clips attach fixture to grid. Same ends fit 2 x 2 and 2 x 4 fixtures.

Access Plate: Snaps in for simple ballast lead hook-up without removing ballast cover.

Finish: White polyester polymer with a minimum of 82% reflectivity.



NOTES

Dimensions subject to change without notice.

Socket Plate: Snap-in mounting style. Available for 2, 3 or 4 T8 or T12 lamps. Sockets are tilted forward to provide positive spring action contact with the lamps. Same socket plates fit 2 x 2 and 2 x 4 fixtures.

Ballast Cover: Snaps in without tools for easy installation.

Catalog No.	Lamps	Voltage	Bulb	Type
LIP24-232	2 T8	120V-277V	F32	Plain
LIP24-232LW	2 T8	120V-277V	F32	Lamp-Whip
LIP24-332	3 T8	120V-277V	F32	Plain
LIP24-332LW	3 T8	120V-277V	F32	Lamp-Whip
LIP24-332LW-DL	3 T8 (Daylite) 750	120V-277V	F32	Lamp-Whip
LIP24-432	4 T8	120V-277V	F32	Plain
LIP24-432LW	4 T8	120V-277V	F32	Lamp-Whip
LIP24-432LW-DL	4 T8 (Daylite) 750	120V-277V	F32	Lamp-Whip
LIP24-432LW-EMG	4 T8 (Emergency)	120V-277V	F32	Lamp-Whip
LIP24-432LW-DL-EMG	4 T8 (Emergency) 750	120V-277V	F32	Lamp-Whip